

# CHILLER

**Water-cooled Magnetic Bearing Centrifugal Chiller**  
**Air-cooled Magnetic Bearing Centrifugal Chiller**



# Water-cooled Magnetic Bearing Centrifugal Chiller

## Water-cooled Chiller Line-up

### R134a Water-cooled Magnetic Bearing Centrifugal Chiller

- High efficiency, 50% higher IPLV than conventional chiller
- Oil-free frictionless inverter compressor technology
- Low noise and less vibration
- High reliability with modular refrigeration cycle system
- Lot technology (Intelligent cloud services)
- 2A start current, low interference to the electricity network

440-7034kW  
(125-2000 Ton)



## SPECIFICATION

MODEL			CCWP0440MTNEACAE1	CCWP0530MTNEBCCE1	CCWP0740MTNEECFE1	CCWP0880MTNEACAE1	CCWP1100MTNEBCCE1	CCWP1230MTNEHCGE1
Cooling capacity	Ton		125	150	200	250	300	350
	kW		439.6	527.6	703.4	879.3	1055	1231
Power input	kW		74.2	88.5	118.8	146.0	172.1	200.8
	kW/kW		5.93	5.96	5.92	6.02	6.13	6.13
COP	kW/Ton		0.593	0.590	0.594	0.584	0.574	0.574
Starting current	A		2	2	2	2	2	2
Max. running current	A		178	180	225	356	360	405
Max. Power input	kW		109	110	138	218	220	248
Safe protection		/	High/low pressure protection, safety protection, short of water relay protection, anti-freezed protection, motor overload, phase sequence and lack of phase protection			High/low pressure protection, safety protection, short of water relay protection, anti-freezed protection, motor overload, phase sequence and lack of phase protection		
Compressor	Type	/	Magnetic bearing compressor			Magnetic bearing compressor		
	Starting mode	/	Soft start			Soft start		
Power supply			3~/380V/50Hz			3~/380V/50Hz		
Refrigerant throttle type			Electronic expansion valve			Electronic expansion valve		
Controller type			PLC control			PLC control		
Refrigerant	Type		R134a			R134a		
	Charge	kg	200	210	230	400	420	440

MODEL			CCWP1130MTNECCDE1	CCWP1400MTNEHCGE1	CCWP1580MTNEACAE1	CCWP1760MTNEACAE2	CCWP1930MTNEACAE2	CCWP2110MTNEBCCE2
Cooling capacity	Ton		375	400	450	500	550	600
	kW		1319	1407	1583	1759	1934	2110
Power input	kW		213.8	230.7	257.7	285.8	313.9	341.9
	kW/kW		6.17	6.10	6.14	6.15	6.16	6.17
COP	kW/Ton		0.570	0.577	0.573	0.571	0.571	0.570
Starting current	A		2	2	2	2	2	2
Max. running current	A		534	450	540	712	720	720
Max. Power input	kW		327	275	331	436	441	441
Safe protection		/	High/low pressure protection, safety protection, short of water relay protection, anti-freezed protection, motor overload, phase sequence and lack of phase protection			High/low pressure protection, safety protection, short of water relay protection, anti-freezed protection, motor overload, phase sequence and lack of phase protection		
Compressor	Type	/	Magnetic bearing compressor			Magnetic bearing compressor		
	Starting mode	/	Soft start			Soft start		
Power supply			3~/380V/50Hz			3~/380V/50Hz		
Refrigerant throttle type			Electronic expansion valve			Electronic expansion valve		
Controller type			PLC control			PLC control		
Refrigerant	Type		R134a			R134a		
	Charge	kg	600	460	630	800	840	840

MODEL			CCWP2540MTNEHCGE2	CCWP2810MTNEHCGE2	CCWP3170STNENCNN1*	CCWP3520STNENCNN1*	CCWP3870STNENCNN1*	CCWP4220STNENCNN1*
Cooling capacity	Ton		750	800	900	1000	1100	1200
	kW		2638	2814	3165	3517	3871	4220
Power input	kW		427.0	453.8	518.5	571.9	631.5	689.5
	kW/kW		6.18	6.20	6.10	6.15	6.13	6.12
COP	kW/Ton		0.569	0.567	0.577	0.572	0.574	0.575
Starting current	A		2	2	2	2	2	2
Max. running current	A		810	900	1080	1125	1260	1440
Max. Power input	kW		496	551	661	689	771	881
Safe protection		/	High/low pressure protection, safety protection, short of water relay protection, anti-freezed protection, motor overload, phase sequence and lack of phase protection			High/low pressure protection, safety protection, short of water relay protection, anti-freezed protection, motor overload, phase sequence and lack of phase protection		
Compressor	Type	/	Magnetic bearing compressor			Magnetic bearing compressor		
	Starting mode	/	Soft start			Soft start		
Power supply			3~/380V/50Hz			3~/380V/50Hz		
Refrigerant throttle type			Electronic expansion valve			Electronic expansion valve		
Controller type			PLC control			PLC control		
Refrigerant	Type		R134a			R134a		
	Charge	kg	880	920	1200	1250	1400	1600

MODEL		CCWP5280STNENCNN1*			CCWP6330STNENCNN1*		CCWP7030STNENCNN1*		
Cooling capacity	Ton		1500			1800		2000	
	kW		5276			6330		7034	
Power input	kW		857.7			1029.4		1138.9	
	kW/kW		6.15			6.15		6.18	
COP	kW/Ton		0.572			0.572		0.569	
Starting current	A		2			2		2	
Max. running current	A		1800			2025		2250	
Max. Power input	kW		1102			1239		1377	
Safe protection		/	High/low pressure protection, safety protection, short of water relay protection, anti-freezed protection, motor overload, phase sequence and lack of phase protection						
Compressor	Type	/	Magnetic bearing compressor						
	Starting mode	/	Soft start						
Power supply			3~/380V/50Hz						
Refrigerant throttle type			Electronic expansion valve						
Controller type			PLC control						
Refrigerant	Type		R134a						
	Charge	kg	1900			2400		2500	



## Modular Water-cooled Magnetic Bearing Centrifugal Chiller



### R134a Modular Water-cooled Magnetic Bearing Centrifugal Chiller

- High efficient falling film evaporator with lower refrigerant charge volume
- Product can be modular connected for bigger capacity application
- The unit can be put into the elevator
- For renovation projects, save installation time and cost
- Save 45% installation space than conventional chiller

320-500kW (90-140 Ton)



## Air-cooled Magnetic Bearing Centrifugal Chiller

### Water-cooled Chiller Line-up

350-1760kW



### R134a Air-cooled Magnetic Bearing Centrifugal Chiller

- High efficiency: IPLV up to 6.3
- Oil-free frictionless inverter compressor technology
- Low noise and less vibration
- IoT technology (Intelligent cloud services)
- 2A start current, low interference to the electricity network
- longevity : 30 + years
- Electric panel IP56



## SPECIFICATION

MODEL		CC0320PWNN	CC0400PWN	CC0500PWNN
Cooling capacity	RT	90	114	142
	kW	320	400	500
Power input	kW	55.2	71.4	89.3
EER	kW/kW	5.80	5.60	5.60
Starting current	A	2	2	2
Max. running current	A	176	178	180
Safe protection		Compressor overload protection, safe protection, low water flow protection., antifreezing protection, fan motor overload protection, lack of phase protection		
Compressor	Type	Magnetic bearing compressor		
	Starting mode	soft start		
	Quantity	1	1	1
Power supply	Ph/V/Hz	3-/380V/50Hz		
Refrigerant throttle type		Electronic expansion valve		
Capacity control		5%-100%		
Controller type		PLC control		
Refrigerant	Type	R134a		
	Charge	kg	80	85

## SPECIFICATION

Model		CC0315PANI	CC0350PANI
Combination		A	B
Cooling capacity	kW	315,0	350,0
Total Power input	kW	92,60	102,0
EER	kW/kW	3,402	3,431
Starting current (Compressor)	A	2	2
Max. running current	A	200	250
Max. power input	kW	110	148
Power supply		3~/380V/50Hz	
Refrigerant throttle type		Electronic expansion valve	
Capacity control		10%-100%	
Safe protection		Compressor overload protection, safe protection, low water flow protection, antifreezing protection, fan motor overload protection, lack of phase protection	
Compressor	Type	Magnetic bearing compressor	
	Quantity	1	1
Refrigerant	Type	R134a	
	Charge	kg	200

Model			CC0440PANI	CC0630PANI	CC0700PANI
Combination			C	2*A	2*3
Cooling capacity		kW	440,0	630,0	700,0
Total Power input		kW	125,0	185,2	203,0
EER		kW/kW	3,520	3,402	3,448
Starting current(Compressor)		A	2	2	2
Max. running current		A	280	400	500
Max. power input		kW	166	220	296
Power supply			3~/380V/50Hz		
Refrigerant throttle type			Electronic expansion valve		
Capacity control			10%~100%		
Safe protection			Compressor overload protection, safe protection, low water flow protection, antifreezing protection, fan motor overload protection, lack of phase protection		
Compressor	Type		Magnetic bearing compressor		
	Quantity		1	2	2
Refrigerant	Type		R134a		
	Charge	kg	270	400	440

Model		CC980PANI	CC1050PANI	CC1140PANI
Combination		2*A+B	3*B	2*B+C
Cooling capacity		kW 980.0	1050	1140
Total Power input		kW 287.2	303.0	325.5
EER		kW/kW 3.412	3.465	3.502
Starting current(Compressor)		A 2	2	2
Max. running current		A 650	750	780
Max. power input		kW 368	444	462
Power supply		3-/380V/50Hz		
Refrigerant throttle type		Electronic expansion valve		
Capacity control		10%~100%		
Safe protection		Compressor overload protection, safe protection, low water flow protection, antifreezing protection, fan motor overload protection, lack of phase protection		
Compressor	Type	Magnetic bearing compressor		
	Quantity	3	3	3
Refrigerant	Type	R134a		
	Charge	kg 620	660	710

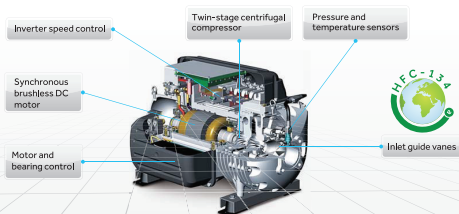
Model			CC1490PANI	CC1580PANI	CC1670PANI	CC1760PANI
Combination			3*B+C	2*B+2*C	B+3*C	4*C
Cooling capacity		kW	1490	1580	1670	1760
Total Power input		kW	423.8	445.0	462.5	482.2
EER		kW/kW	3.516	3.551	3.610	3.650
Starting current(Compressor)		A	2	2	2	2
Max. running current		A	1030	1060	1090	1120
Max. power input		kW	610	628	646	664
Power supply			3-/380V/50Hz			
Refrigerant throttle type			Electronic expansion valve			
Capacity control			10%-100%			
Safe protection			Compressor overload protection, safe protection, low water flow protection, antifreezing protection, fan motor overload protection, lack of phase protection			
Compressor	Type		Magnetic bearing compressor			
	Quantity		4	3	4	4
Refrigerant	Type		R134a			
	Charge	kg	930	980	1030	1080

## FEATURES

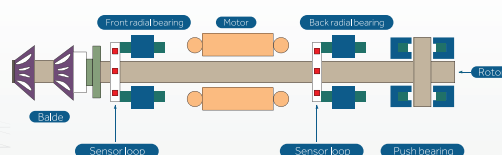
### Advance Technology

#### Compressor Technology

- Turbocor Compressor Technology



#### • Magnetic Bearing Technology



- Permanent magnet motor and Landing bearing
- Inverter Driving
- Frictionless System

## Intelligent control

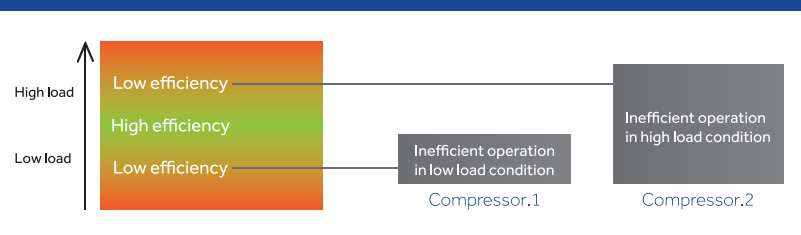
- Cloud service center



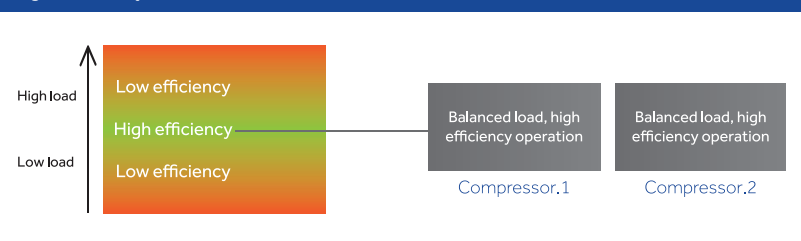
- Load sharing strategies in multi-compressor refrigeration system

The control technology of load sharing strategies in multi-compressor refrigeration system can make every compressor operate in equilibrium load value, by which the unit can keep the optimal operation performance.

### Low Efficiency



### High Efficiency



## Low noise and less vibration

## Longevity 30+ years

## Low installation cost

## Compressor safe operation

## Low maintenance cost

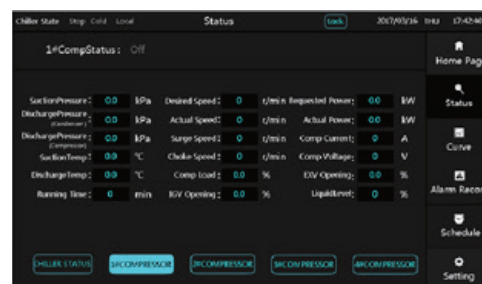
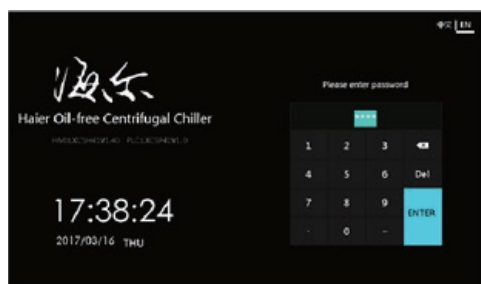
## Low operation cost



## Friendly Operation Screen

Big LCD touch screen Chinese and English are selectable

Calendar/Fault inquiries/Water system equipment interlocking/Remote control/Unit operation parameters quick inquiry



Distributed by:  
PT. Haier Sales Indonesia  
Jl. Danau Sunter Barat Blok A III  
No. 38-39, Jakarta Utara 14350

aqua japan  
aqua japan  
www.aquajapanid.com

Call Center (Bebas Pulsa)

**0800 1 003 003**

Jam Operasional

Senin - Jumat (08.30 - 18.00 WIB)

Sabtu (09.00 - 15.00 WIB)